



**THE AMERICAN FRIENDS OF LAFAYETTE**

**FOUNDED 1932**

# What would Lafayette Wear?

1820s Historical Clothing Review &  
Reproduction Resources

Presented by  
Carrie Midura and Derek Heidemann  
Old Sturbridge Village

---

# Women's Dress in the 1820s

## Welcoming Lafayette



Carrie Midura

Coordinator of Historical Clothing & Households

Old Sturbridge Village

# A Visit 200 Years in the Making



# \*Under it all

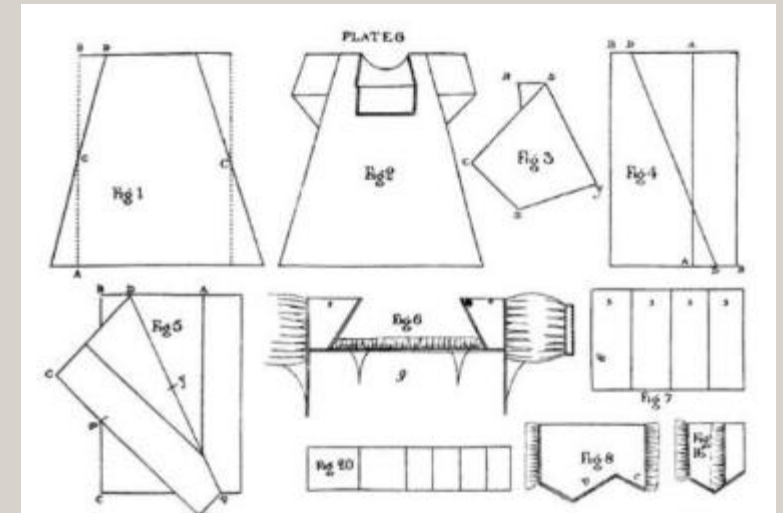
## Shifts & Chemises



Linen shift, early 19<sup>th</sup> century, OSV:  
<https://collections.osv.org/object-26-26-65>



Hand-sewn linen chemise, early 19<sup>th</sup> century, V&A:  
[collections.vam.ac.uk/item/O327719/shift-unknown/](https://collections.vam.ac.uk/item/O327719/shift-unknown/)



Detail from *The Workwoman's Guide*, 1838



# Support

Stays & Corsets



Corset, early 19<sup>th</sup> century, OSV:  
<https://collections.osv.org/object-26-36-15>



## BOOKS

*Needle & Thread* (OSV)  
early 19c corset

*Corsets and Crinolines* (Waugh)  
late 1820s stays

*Stays and Corsets* (Barrington)  
early 1820s stays

## PATTERNS & GARMENTS

Genesee Country Village & Museum  
[www.gcv.org/historic-pattern-database/](http://www.gcv.org/historic-pattern-database/)  
Soft Corset With Blue Thread Pattern

Laughing Moon Mercantile  
<https://www.laughingmoonmercantile.com/>  
Ladies Regency and Romantic Era Corset

RedThreaded  
<https://redthreaded.com/>  
1810s Regency long stays (pattern, garment)  
1830s stays (pattern, garment)

# \* Proper Shape

Petticoats, Bustles, & Bums



Linen bodice petticoat, early 19c.  
Metropolitan Museum of Art:  
[metmuseum.org/art/collection/search/81577](https://www.metmuseum.org/art/collection/search/81577)



Cotton Petticoat, early 19c.  
MFA Boston:  
[/collections.mfa.org/objects/49958](https://collections.mfa.org/objects/49958)



Illustration, *The Book of English Trades*, 1824

Patterns

Laughing Moon  
Mercantile

<https://www.laughingmoonmercantile.com/>

115 Ladies  
Regency Corset &  
Chemise

132 Ladies  
Regency Bodiced  
Petticoat, Bum  
Roll & Pocket

# Fashions

Dresses & Gowns



Cylinder printed cotton dress and collar, c.1825.  
OSV: <https://collections.osv.org/object-26-33-190a-b>



Suggested Pattern: Laughing Moon 137 Ladies' Regency Pelisse and Spencer

# Fashions

Dresses & Gowns

#137 LAUGHING MOON MERCANTILE  
LADIES' FRONT OPENING  
PELISSE AND SPENCER  
- C. 1810-1825  
Sewing Pattern with Sizes 4 -34, All Included



Cylinder printed cotton dress and collar, c.1825.  
OSV: <https://collections.osv.org/object-26-33-190a-b>

Suggested Pattern: Laughing Moon 137 Ladies' Regency Pelisse and Spencer

# Fashions

Dresses & Gowns



Silk dress with piped self-fabric trimming, c.1820.  
OSV: <https://collections.osv.org/object-26-33-132>



Suggested Pattern(s): Laughing Moon 138 Ladies Regency Gown or Black Snail 422 Evening Dress

# Fashions

Dresses & Gowns



Silk and wool surplus front dress, 1820-1825.  
OSV: <https://collections.osv.org/object-26-33-51>



Suggested Pattern: Truly Victorian 455 1830s Dress (sleeves only)

# Fashions

Dresses & Gowns



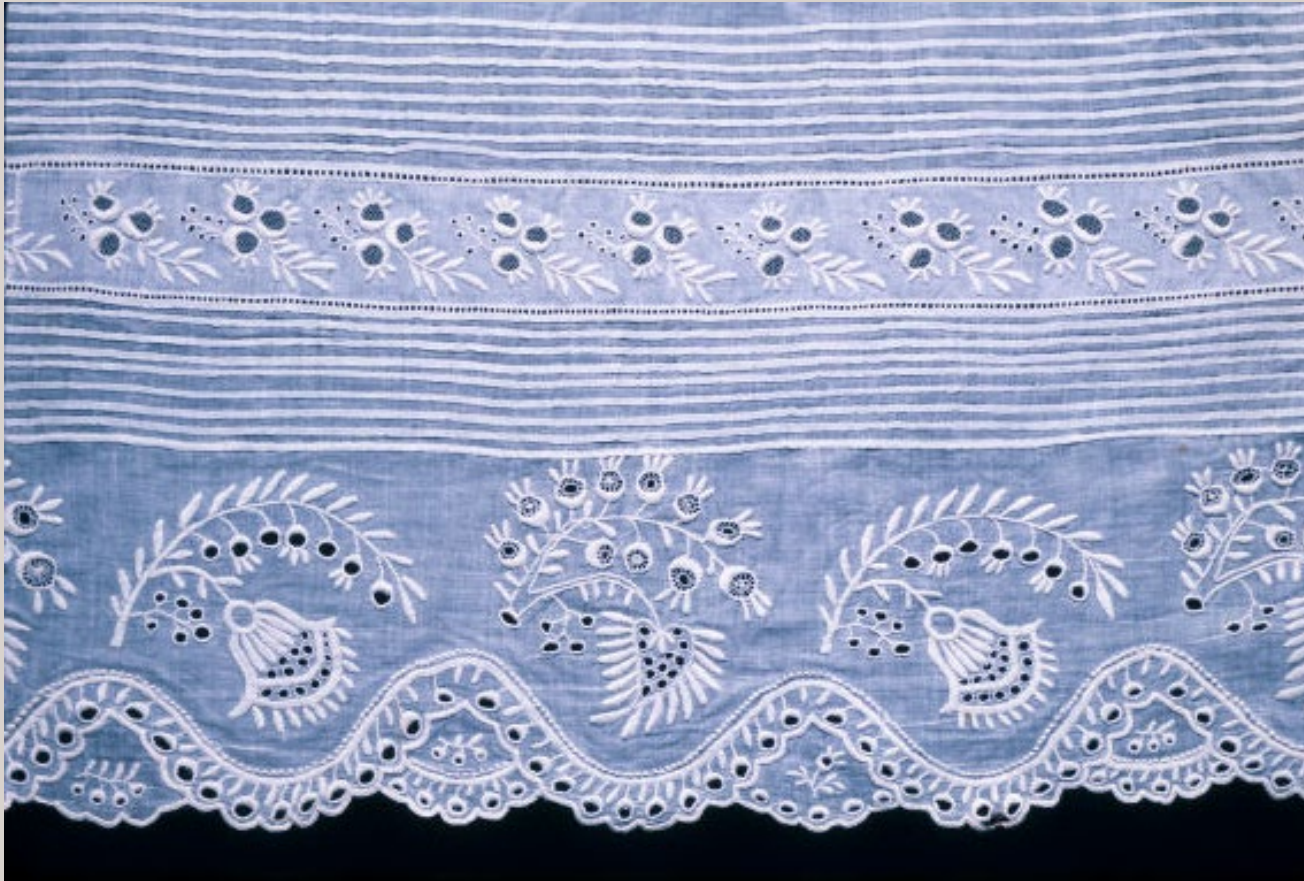
Silk Wedding Dress, 1824. MET Museum  
<https://www.metmuseum.org/art/collection/search/159502>



Fashion plate, 1824. MET Museum.  
<https://libmma.contentdm.oclc.org/digital/collection/p15324coll12/id/3697/rec/73>

# Fashions

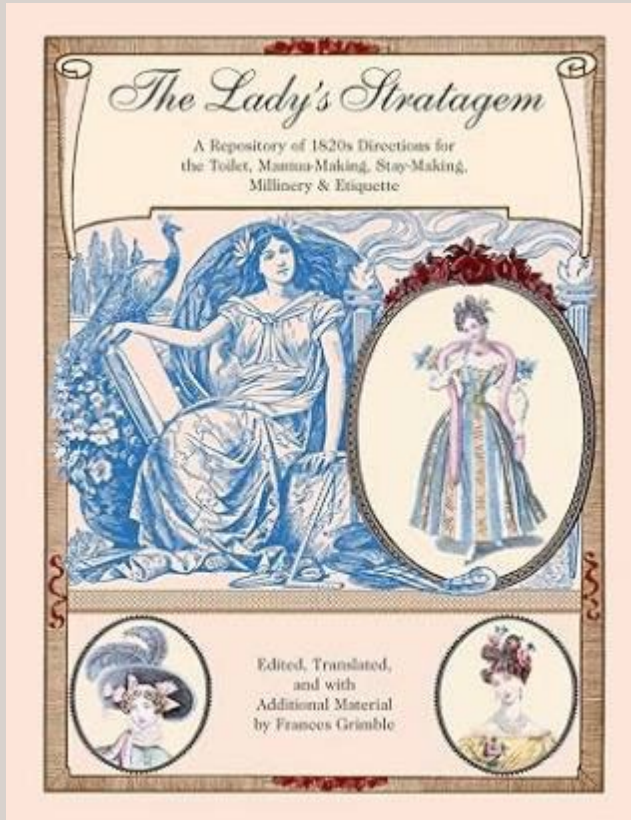
Dresses & Gowns



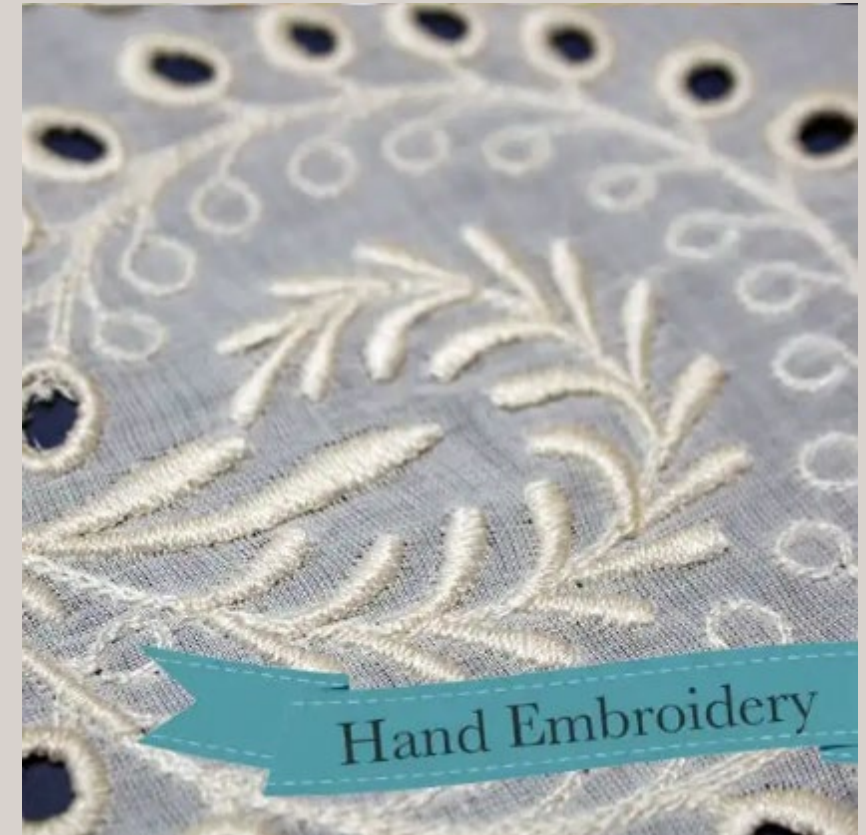
Suggested Pattern(s): Black Snail Patterns #0422 Empire / Regency evening dress

# ✱ Embroidery

## Pattern Sources



Patterns of Perfections  
Embroidery designs from Lady's Magazine  
<https://ladysmagazine.omeka.net/>



1823 Embroidery Design  
Romantic Recollections  
<https://romanticrecollections.com/>

# \*Heads Above

## Caps, Hats & Bonnets



Cotton cap, 1820s, MFA Boston  
<https://collections.mfa.org/objects/313751>



Embroidery template for cap, OSV  
<https://collections.osv.org/object-22-12-411>



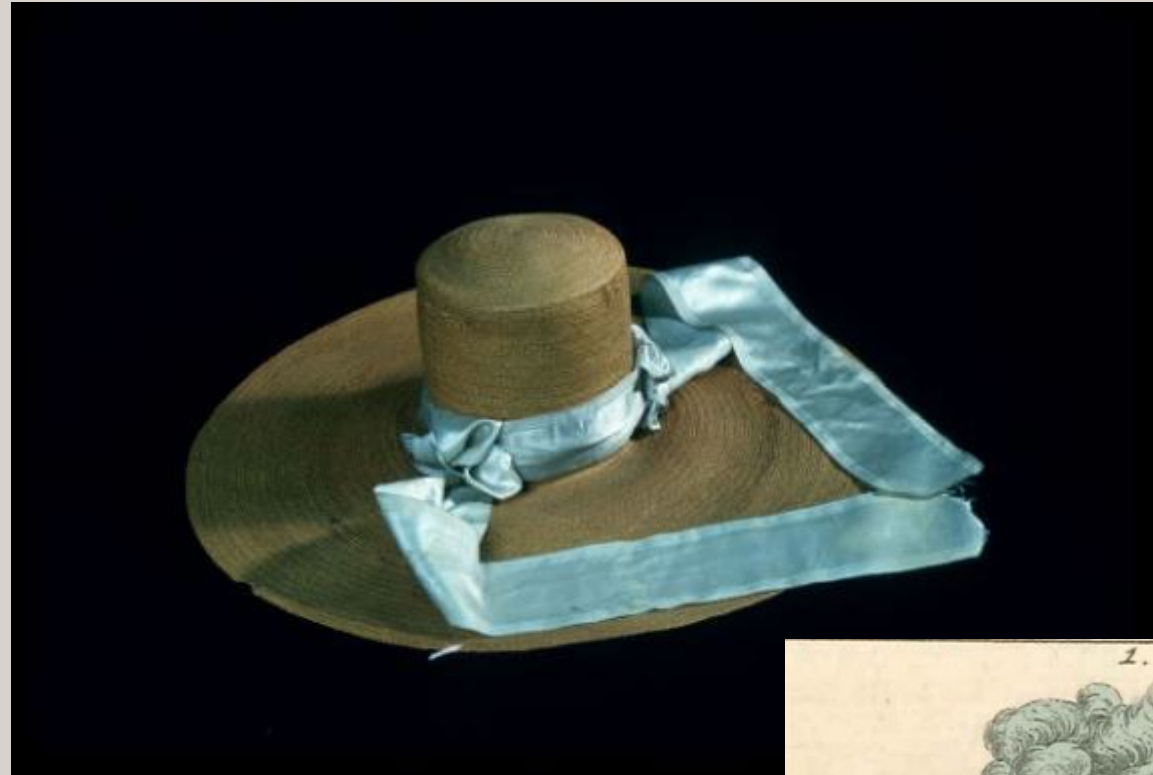
Embroidered net cap, c1825. MFA Boston:  
<https://collections.mfa.org/download/115586>

# \*Heads Above

## Caps, Hats & Bonnets



Straw bonnet 1820-1830, OSV:  
<https://collections.osv.org/object-65-1-11>



Straw hat with silk ribbons, c.1825. OSV:  
<https://collections.osv.org/object-65-1-9>

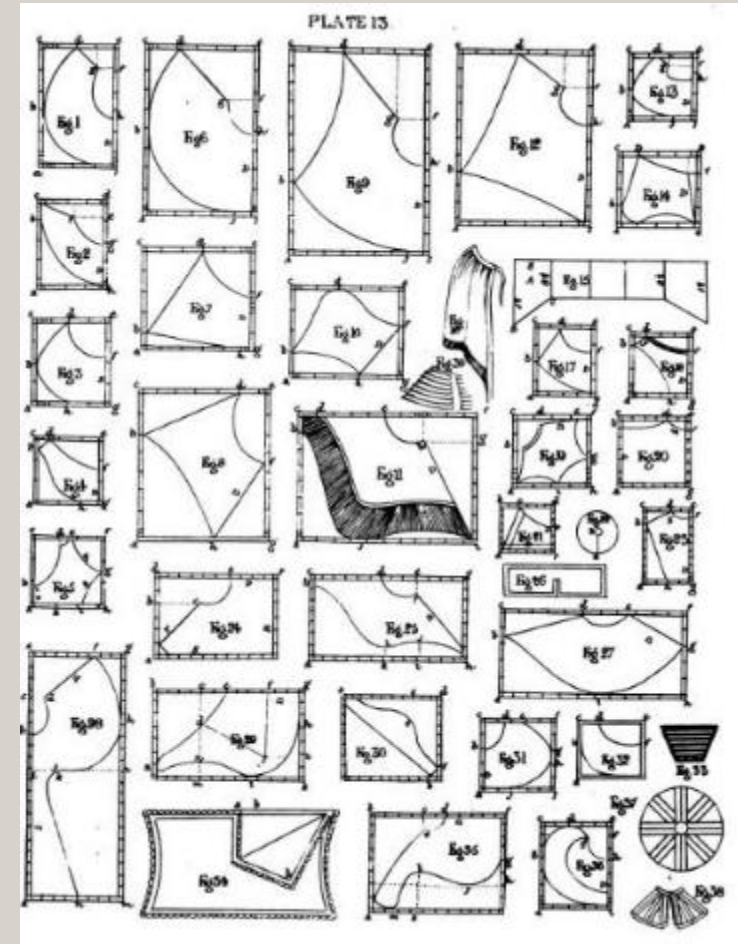


# \*Fancy Details

Collars, Capes, & VanDykes



VanDyke with VanDyke edging, 1820-1840. OSV:  
<https://collections.osv.org/object-26-54-233>



Detail from *The Workwoman's Guide*, 1838

# \*Stepping Out

Slippers, Shoes, Booties



Cotton and leather side laced booties, OSV:  
<https://collections.osv.org/object-26-57-36a-b>



Dark brown Morocco slippers c.1820-1840, OSV: <https://collections.osv.org/object-12-14-47a-b>



Silk slippers,. Museum of Applied Arts & Sciences:  
<https://collection.maas.museum/object/239613>



Cotton gingham parasol, OSV:  
<https://collections.osv.org/object-26-3-35>



Printed leather gloves, French  
 Massachusetts Historical Society &  
 MET Museum



Jasperware and brass earrings, OSV:  
<https://collections.osv.org/object-85-3-11a>



Handknit cotton stockings,  
 OSV:[collections.osv.org/object-26-17-137a](https://collections.osv.org/object-26-17-137a)

# Upcoming Workshops



*Our Fair Fashionables*

An In-Person Workshop Experience

with Samantha Bullat



B&T

Burnley & Trowbridge

*Dressing For Lafayette: Cur non?*

Presented by  
*Dannielle Perry*  
*Mackenzie Anderson Sholtz*

FEB 29 - MARCH 3, 2024  
LEXINGTON, KY



Fig Leaf Patterns & Timely Tresses

---

# Men's Dress in the 1820s

## Welcoming Lafayette



Derek Heidemann

Director of Collections and Research

Old Sturbridge Village



Unidentified Man

Old Sturbridge Village Museum Collections



Southworth Allen Howland

by Charles Curtis in Worcester, March 1825  
Old Sturbridge Village Museum Collections

**1822.**

Digitized by Google



## SHIRTS



Old Sturbridge Village Museum Collections

## TROUSERS & PANTALOONS





Old Sturbridge Village Museum Collections

**LAUGHING MOON MERCANTILE**  
**#131 MEN'S REGENCY TROUSERS**  
 INCLUDING TROUSERS, COSSACKS, SAILOR'S  
 TROUSERS, PANTALOONS, MOSCHETTO'S, AND  
 PANTALOOON TROUSERS C. 1790-1830  
 ALSO KNOWN AS SMALL FALLS  
 Sizes 30-52, All in the Envelope



View A Trousers



View B Cossacks



View F Sailor's Pants

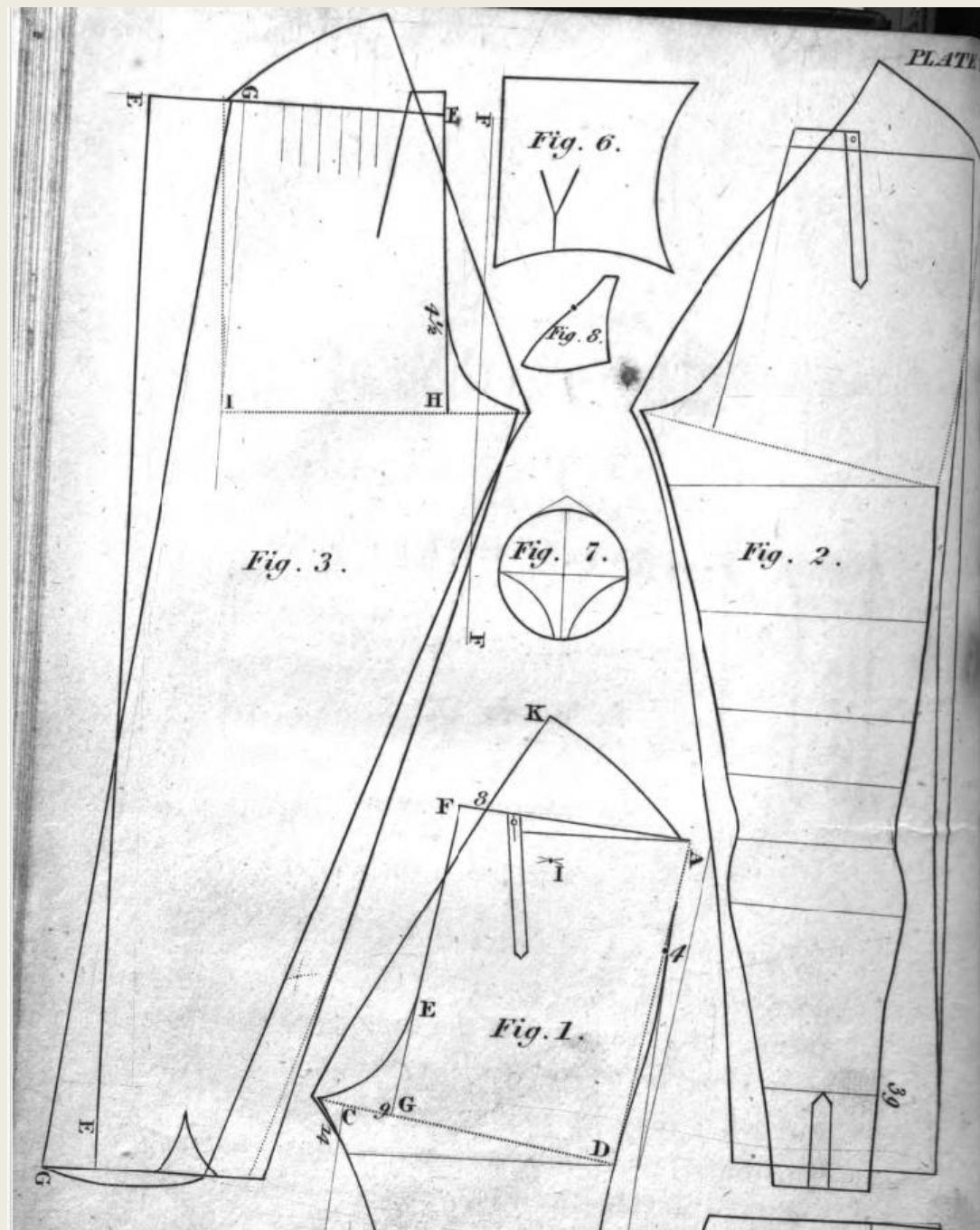


Views A, B, & F Back



AS REPRESENTED  
IN PLATE IX. FIG. 2.

## *The Tailor's Friendly Instructor, 1822*



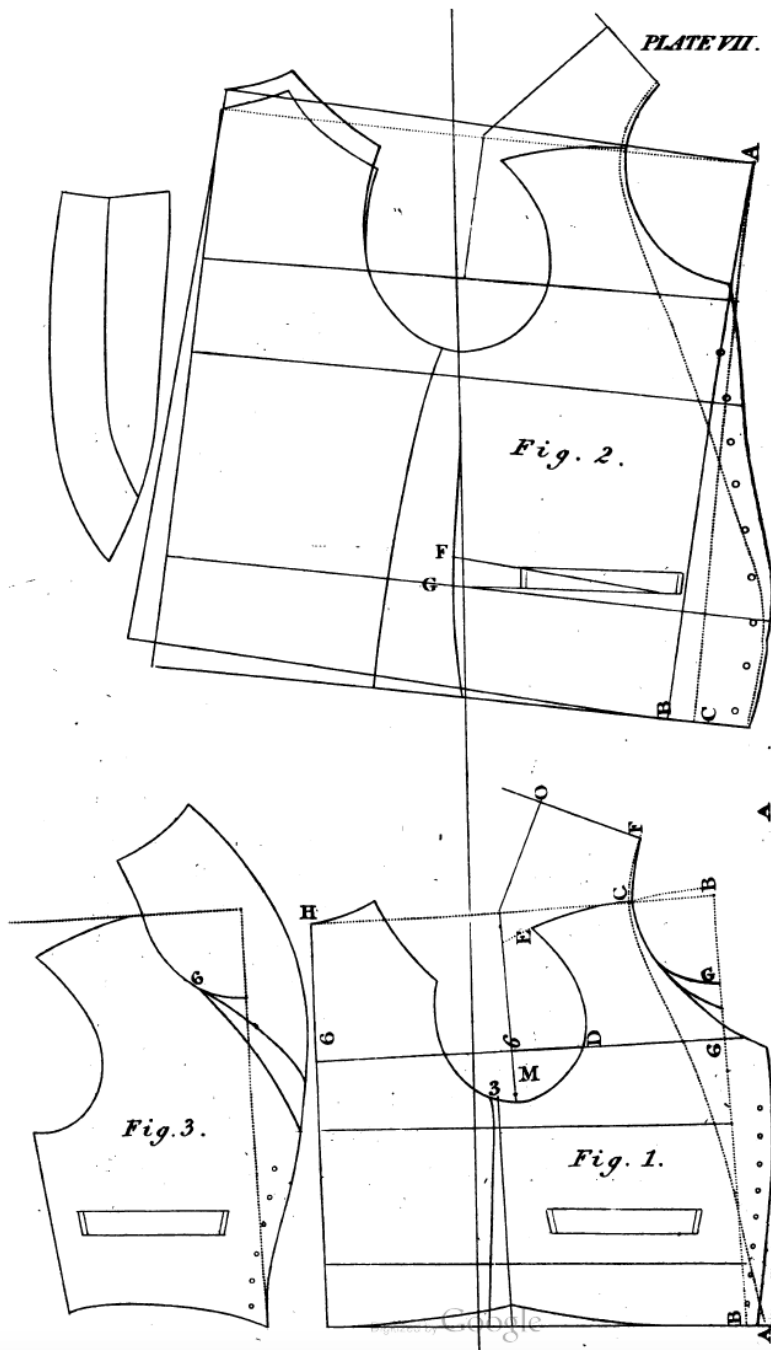
## VESTS



Old Sturbridge Village Museum Collections

# The Method OF FORMING THE WAISTCOAT

IN PLATE VII. FIG. 1.



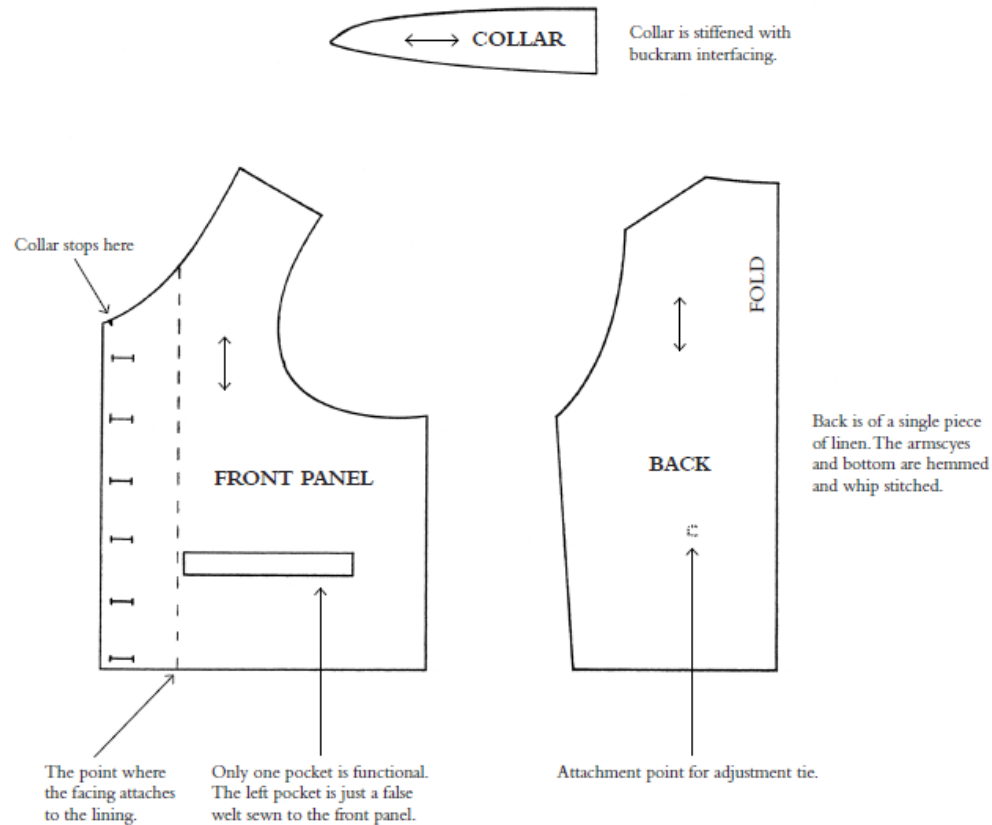
THE line A A denotes the double edge of the stuff, the forepart is to be taken from; before you proceed to mark the forepart, consider whether you intend the waistcoat to be full over the chest, or button close to the breast; if required to be full in the front, the line B B must be drawn as much within the edge as may be judged sufficient according to fancy, say, 2 inches from the edge opposite the breast; but if intended to button close, a line drawn 1 inch within parallel to the edge would be sufficient to allow for turnings in, and the distance

E 2

# VEST

c. late 1820s to late 1830s | OSV 26.31.75

This vest is constructed from a striped mixed wool and cotton cloth with a plain woven linen back. This pattern shows the vest as it was originally worn before the collar was folded down and tacked to imitate a notched collar, likely sometime in the 1830s.



Pattern from *Needle & Thread: The Art and Skill of Clothing an Early 19th-Century Family*

Available at  
<https://shop.osv.org/collections/books/products/needle-thread>



## COATS



Old Sturbridge Village Museum Collections



Old Sturbridge Village Museum Collections

LAUGHING MOON MERCANTILE  
SEWING PATTERN

#122

MEN'S EMPIRE AND REGENCY TAILCOAT  
WITH 3 COLLAR AND LAPEL OPTIONS  
Sizes 34—56, All in the Envelope

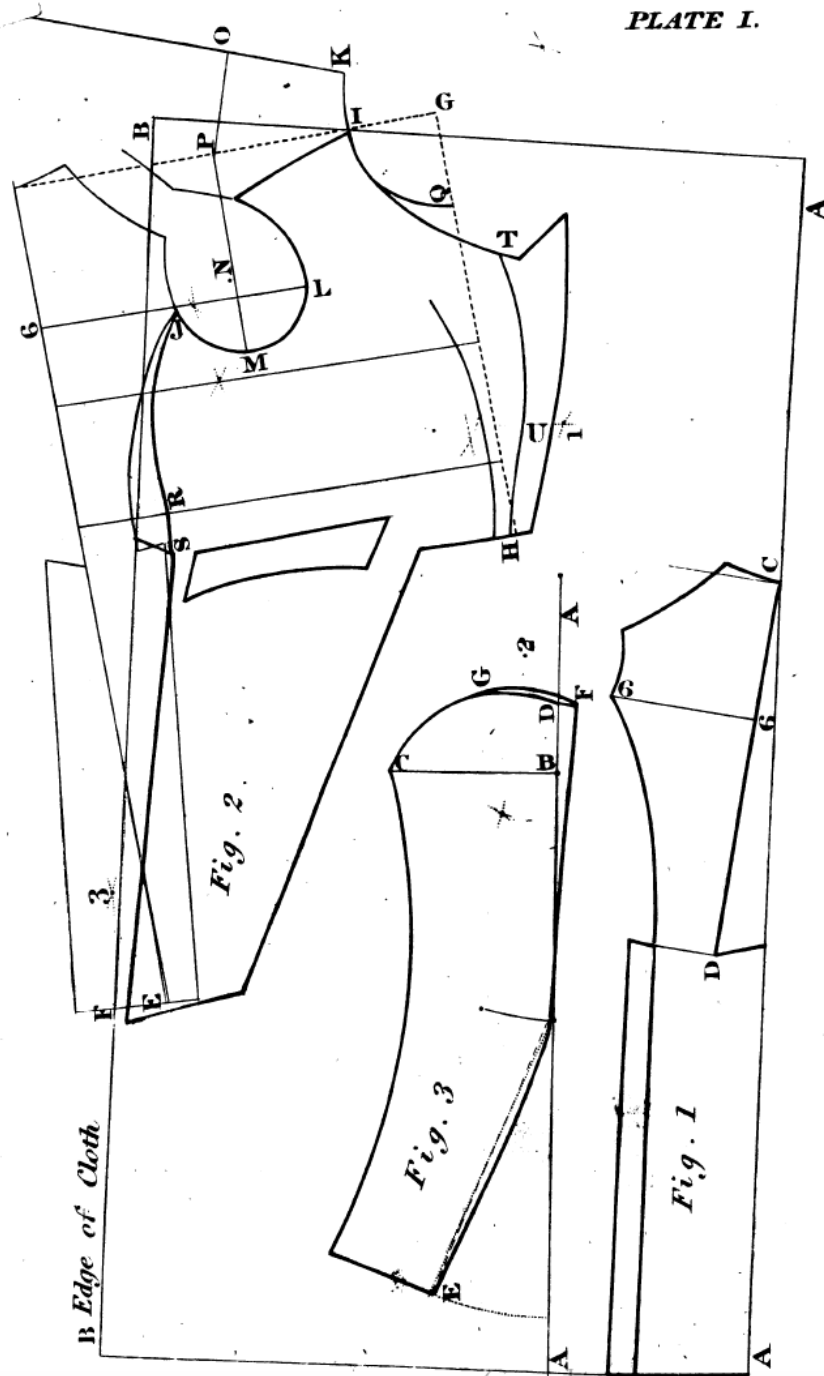


Preferable for 1824-25

#121 - LAUGHING MOON MERCANTILE  
MAN'S REGENCY TAILCOAT  
WITH 5 COLLAR AND LAPEL OPTIONS  
Sizes 34—56, All in the Envelope,



A brand-new cut for the mid-1820s that leans closer towards the later part of the decade.



# The Method of MEASURING A MAN

FOR

## A COAT.

WHEN you proceed to measure a person, first request him to button his coat, that you may better discern his shape and position, then place the end of the measure to the top of the back-seam, or where you intend the top of the back-seam to be, and extend it to the required length of the waist, say 16 inches, continue it to the length at bottom, say 36 inches; next require the person to bend his arm, while you take the length of the sleeve from the back-seam to the elbow 19 inches, and from the elbow to the hand, making 33

# HANDKERCHIEFS



Old Sturbridge Village Museum Collections

Reproductions of similar styles are available from Burnley and Trowbridge

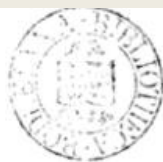


Historic Deerfield Collection



Old Sturbridge Village Museum Collections

Reproductions of similar ribbons are available from Neal Hurst, Tailor



# LLOYD'S TREATISE ON HATS,

WITH

TWENTY-FOUR ENGRAVINGS;

CONTAINING

NOVEL DELINEATIONS OF HIS VARIOUS SHAPES, SHEWING  
THE MANNER IN WHICH THEY SHOULD BE WORN, THE  
SORT OF FACE AND PERSON BEST SUITED TO EACH  
PARTICULAR HAT, AND RULES FOR THEIR PRESERVA-  
TION; TO WHICH IS ADDED, THE WHOLE PROCESS OF  
HAT-MAKING; TOGETHER WITH THE CUSTOMS AND  
REGULATIONS OF JOURNEYMEN HATTERS, AND OTHER  
USEFUL INFORMATION.

---

---

Dedicated, with Permission, to the Queen.

---

---

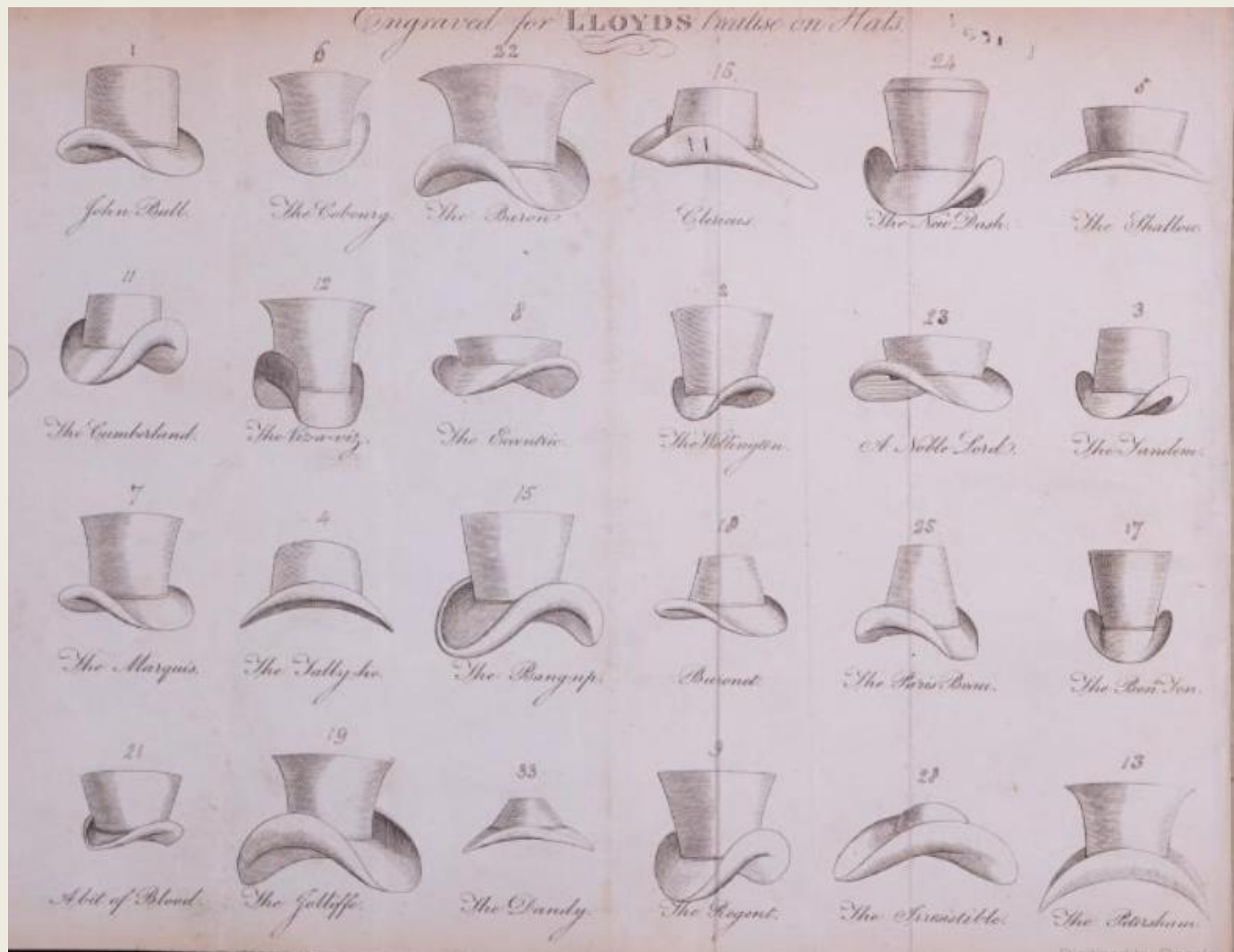
SECOND EDITION.

LONDON:

PRINTED FOR THE AUTHOR,

By F. Thorogood, 9, Alder Street, Aldermanbury.

1819.





Hats by Matt Brenckle



# MILITIA UNIFORMS



Winterthur Collection

## COMMONWEALTH OF MASSACHUSETTS.

### GENERAL ORDERS.

HEAD QUARTERS, BOSTON, MARCH 22d, 1823.

THE General Order of the 22d of August last, establishing a **UNIFORM** for the Militia of this Commonwealth, is *modified and altered*, as follows.

The Commissioned Officers of such Volunteer Companies as shall choose to wear Wings instead of Epaulettes, shall wear one Chevron; on *each arm*. Sergeants of such Companies will wear one Chevron of worsted braid, on each arm, *above* the elbow, and Corporals one on each arm, *below* the elbow.

All the Officers and Privates of such Volunteer Companies as are provided with a Uniform, and such as shall hereafter enlist into, or, be commissioned in the same, shall be permitted to wear the present Uniform, equipage and ornaments of their respective Companies, *without any exception*, for five years, from the first Tuesday of May next.

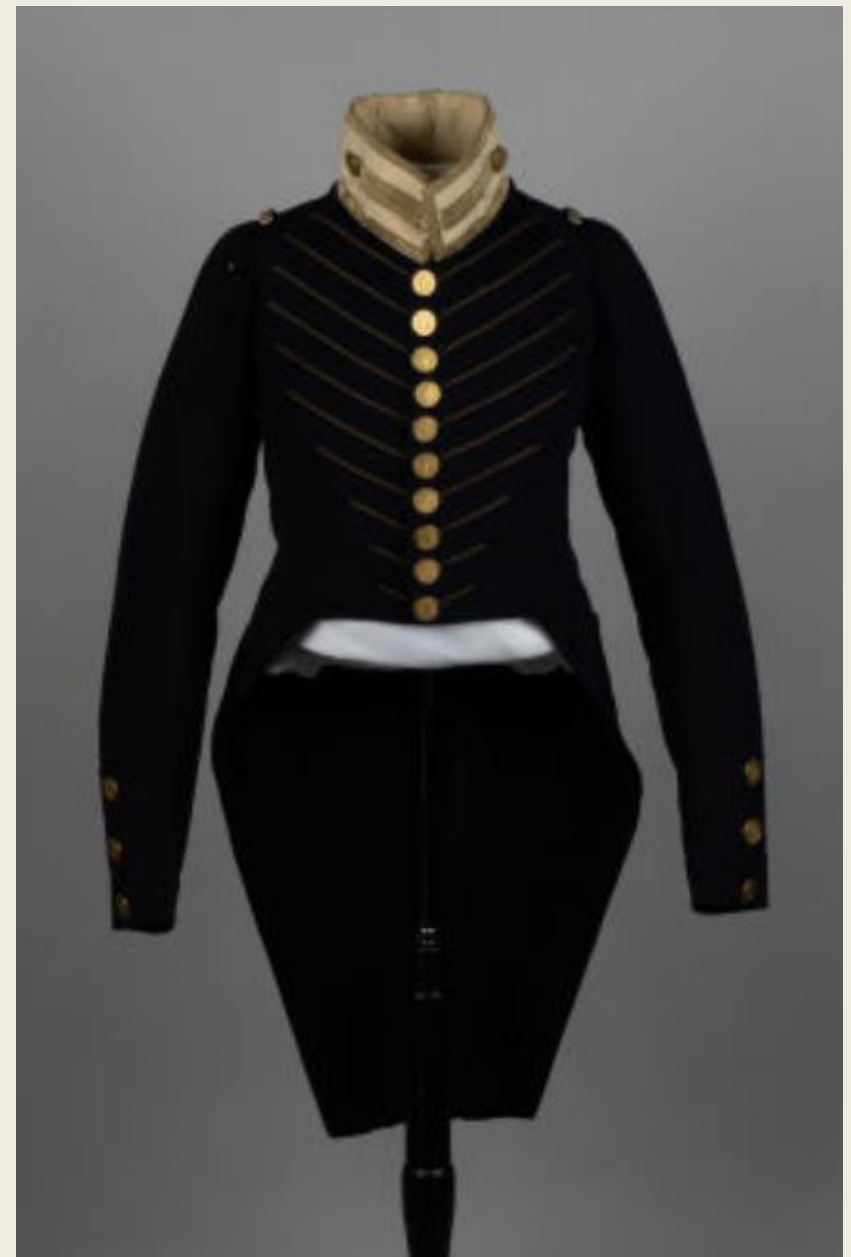
The Commissioned Officers of the several **LIGHT INFANTRY COMPANIES** shall have power to determine the *color as well as the fashion of the Caps and under clothes* which shall be worn by their respective Companies.

The Officers of all ranks and Corps, who were authorized by the Order of the 22d of August last, to establish the fashion of the dress and military ornaments which shall be worn by the Officers of their respective Staffs and Corps have their power so far extended, as to authorize them to determine whether their several **Non-commissioned Staff and Company Officers, Musicians and Privates shall wear Plumes, Feathers or Pompons**. They may also direct that their several Sergeant Majors, Quarter Master Sergeants, Drum and Fife Majors and Masters of Brigade Bands shall wear Wings and Sergeants Chevrons, instead of Epaulettes, if they see fit.

The Officers of the **INFANTRY** Companies shall not be restricted to wear Coats; but the Field, and Standing Company Officers of the Infantry Regiments, may determine that *Coatees* shall be worn by said Company Officers, if they please; and all such Officers shall provide themselves with the uniform of their respective regiments, which shall thus be established.

The Militia Law of the 11th of February last, having required the Selectmen of the several towns, and the Mayor and Aldermen of the City of Boston, to expend the conditional exempt money, for the purchase of such articles of Uniform and Military equipments as then were, and should, thereafter, be required to be worn, by the Commander in Chief, among the several Companies in said towns, or city, in proportion to the *active privates* who shall be borne on their respective rolls on the first Tuesday of May in each year;—The Captains and Commanding Officers of Companies, in the month of May, annually, will furnish the said Selectmen, and Mayor and Aldermen, with a copy of their Company rolls distinguishing the names of the active privates from the others which are borne thereon. They will also give such further information, as shall be necessary, to enable them to make an equal distribution of the funds aforesaid, and suitable regulations for the safe keeping and proper preservation of the articles, which shall be procured.

The time for providing the Uniform required to be worn in conformity to the act of the Legislature of the 21st of February, 1822, and for making the reports of the same, and of that which shall continue to be worn by those Officers, and Companies which are already provided, is extended from the first Tuesday of May, *to the first day of September next*, when the records will be made and the returns delivered by the Captains of the Companies and the Adjutants of Regiments and separate Battalions, to the Brigade Majors, who will forward them, to the Adjutant General's Office, with their next inspection returns.



Return of Uniforms  
3rd Regt. - 3rd Brigade. First Division. M. G.

Field Officers

Long blue coat, with standing collar, three rows of white metal buttons on the breast impressed with the arms of the State, collar trimmed with silver lace diamond on the skirt, - White drilling pantaloons over Wellington boots, - Chapeaux with a cockade and white plume, scarlet silk sash, silver epaulettes and other appropriate equipment.

Commissioned Staff Officers

The same as worn by the Field Officers, with the exception of the distinguishing badges of Office.

Commissioned Officers of Infantry Companies.

Short blue coat, with standing collar, three rows of white bell buttons on the breast, collar trimmed with silver lace, - White drilling pantaloons over Wellington boots, - Round black leather cap, with a silver eagle and rose in front, - long white plume, scarlet silk sash &c.

Uniform of the City-Guards.

Coats of gray mixed cloth, trimmed with black cord and gilt bell buttons, single breasted, standing collar

Caps, black leather, bell crown, brass eagle in front, black leather cockade, with a small yellow button in the center with an eagle impressed upon it, - Black plume 18 inches long worn in front supported by a small brass ball, - Pantaloons, white linen drilled made loose and worn over boots, - Officers badges of wings of gold bullion, chevrons of gold lace, sashes of silk net, red, - The scales and eagles of Officers caps are gilt instead of brass, otherwise the same as privates.

Rangers.

Coat, - short blue, standing collar, lace on the same, three rows of buttons in front stamped with the arms of the State, - Cap, patent leather, brass Indian Chief in front, brass scales and band, brass chain, - Plume 18 inch white vulture, - Badges of commissioned and non commissioned Officers the same as worn by Army Officers of the United States.

Winslow Blues.

Coats, - short blue, with three rows of bullet buttons in front, upright collar with gold lace around the edge, Pantaloons, of white drilling worn over Wellington boots, Caps, - black round leather with white plumes.

Geo. W. Thayer Adj. 3<sup>d</sup> Regt.



Recreated Oxford Light Infantry, 1824-1837